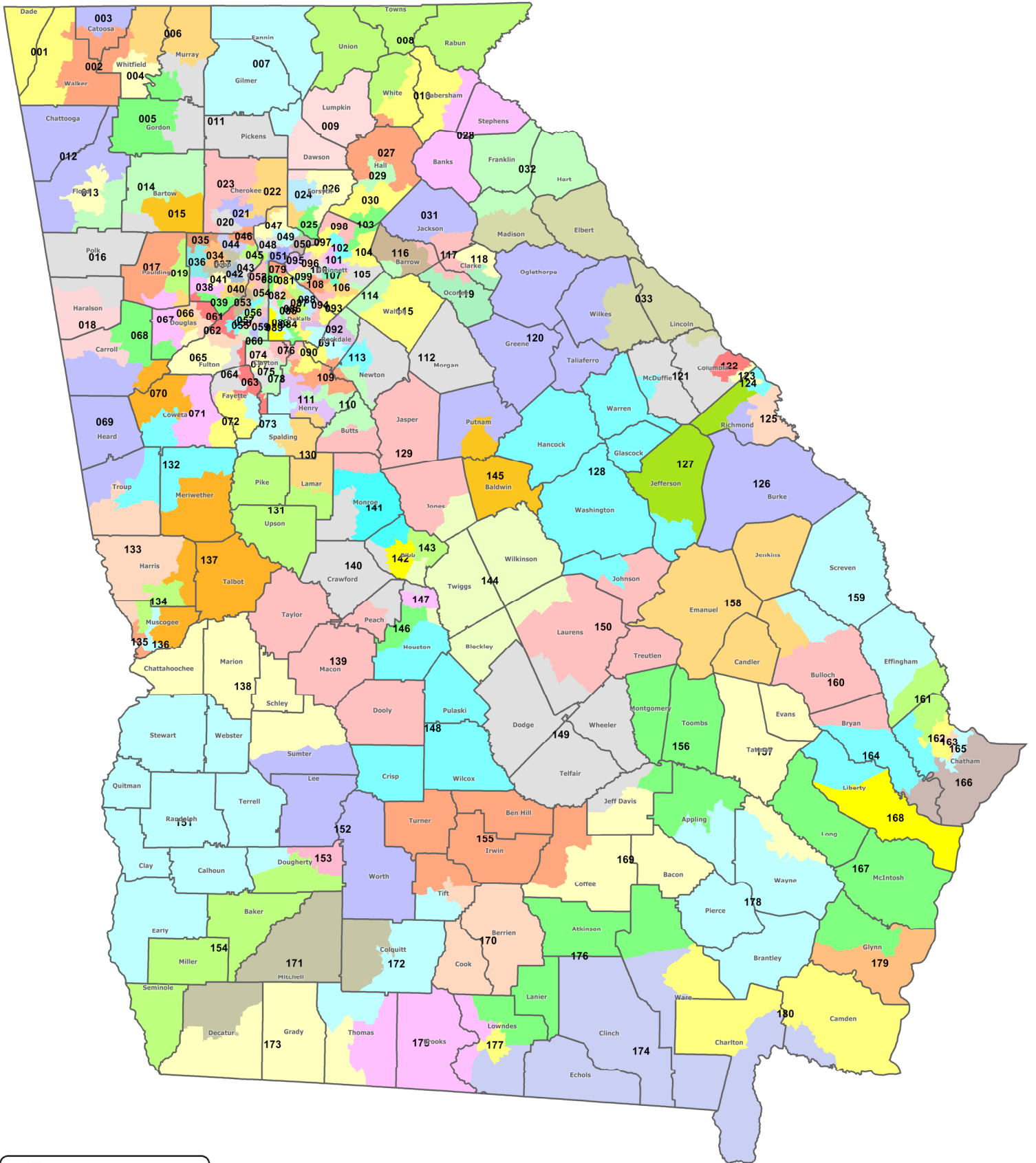


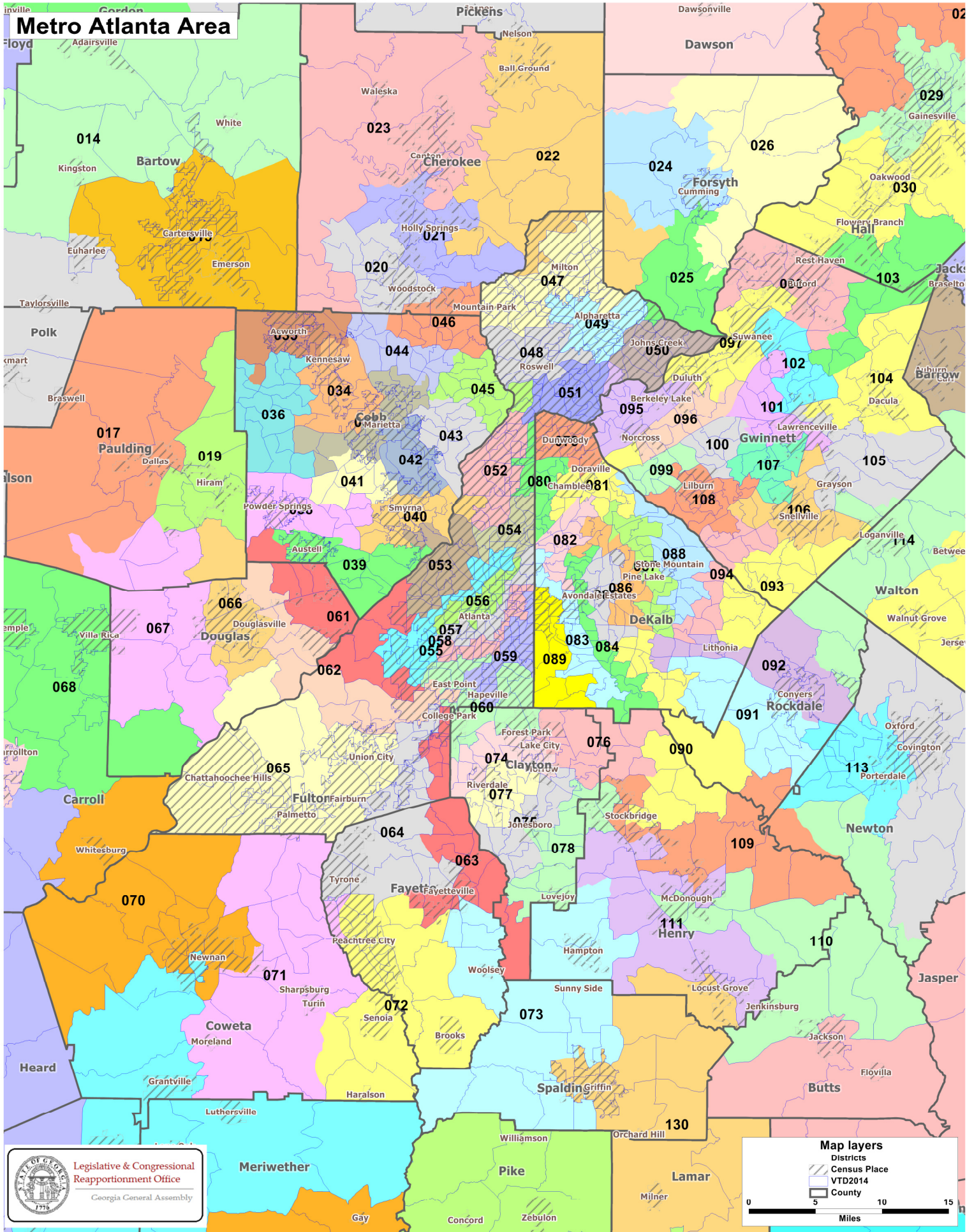
Georgia House Districts- 2015

Client: State
Plan: House15
Type: House



Georgia House Districts- 2015

Client: State
Plan: House15
Type: House



Metro Atlanta Area

 Legislative & Congressional Reapportionment Office
Georgia General Assembly

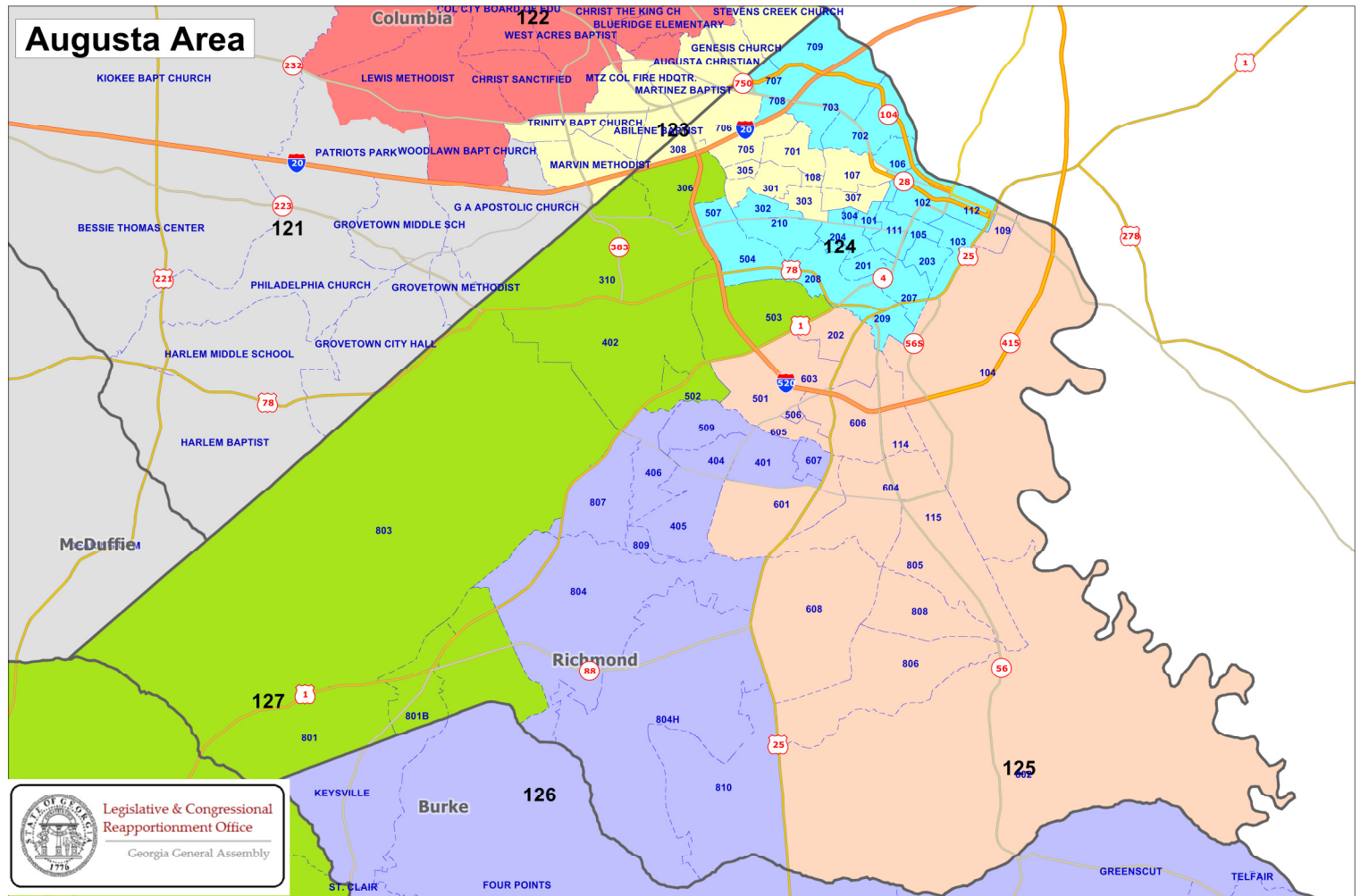
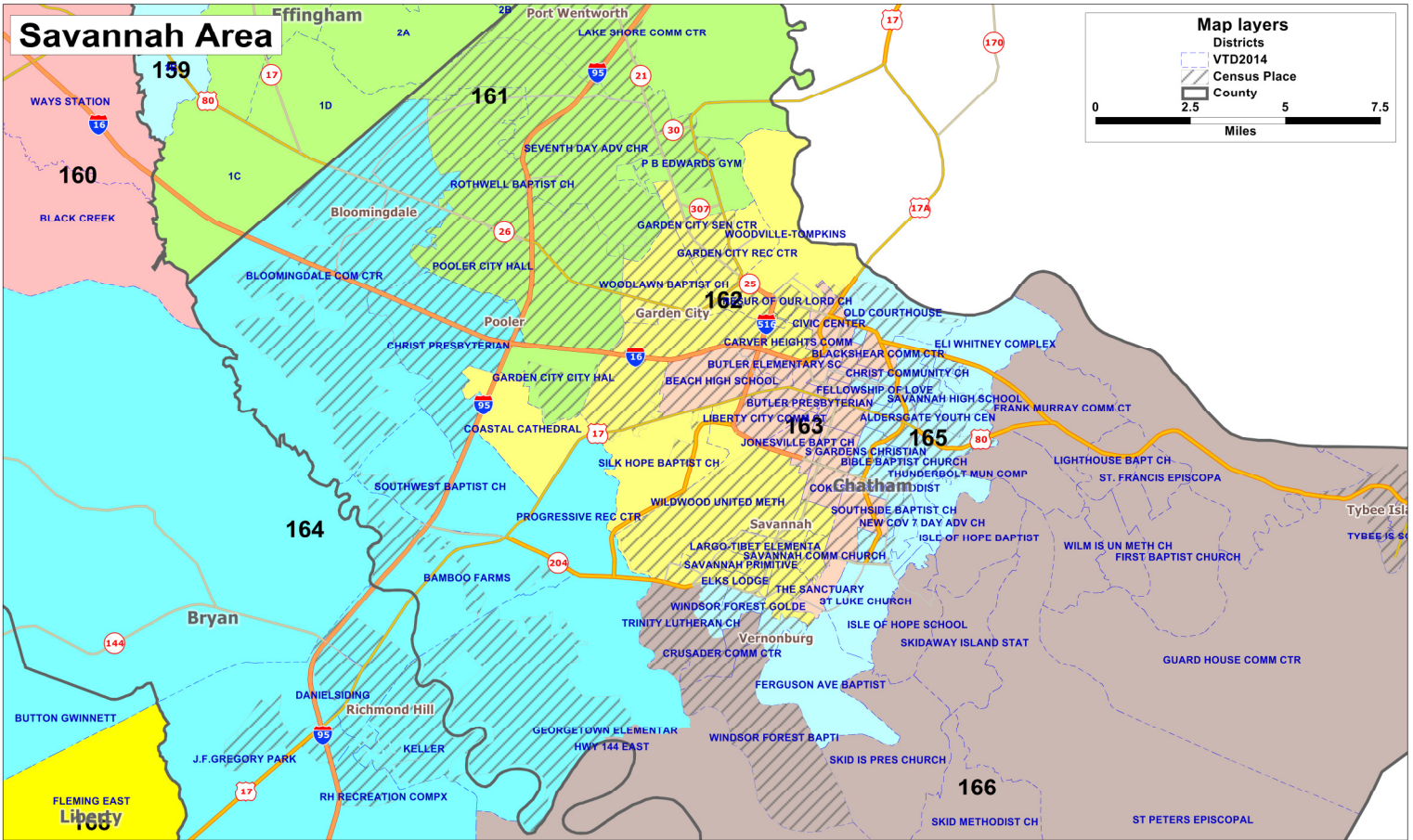
Map layers

- Districts
- Census Place
- VTD2014
- County

0 5 10 15 Miles

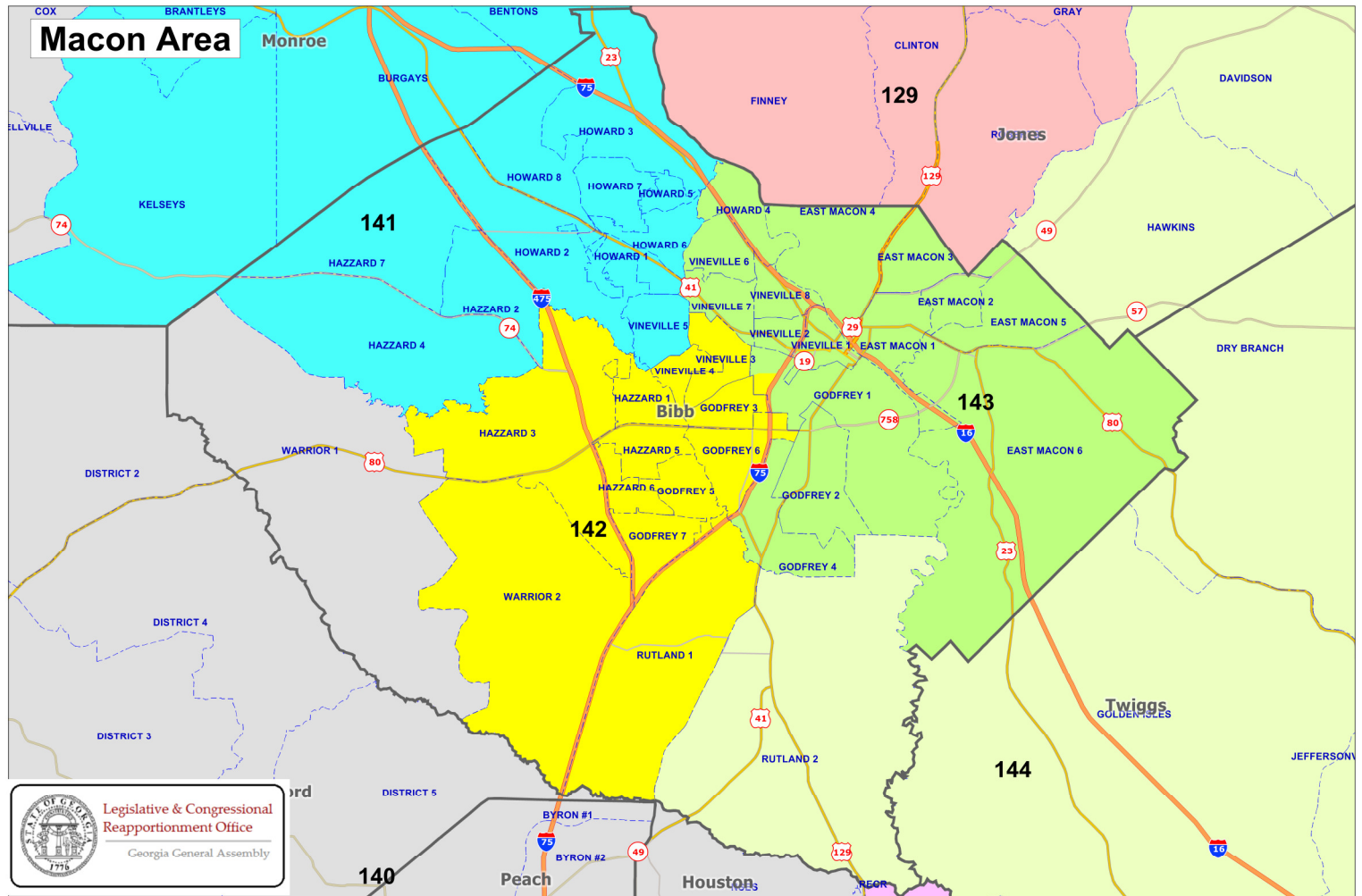
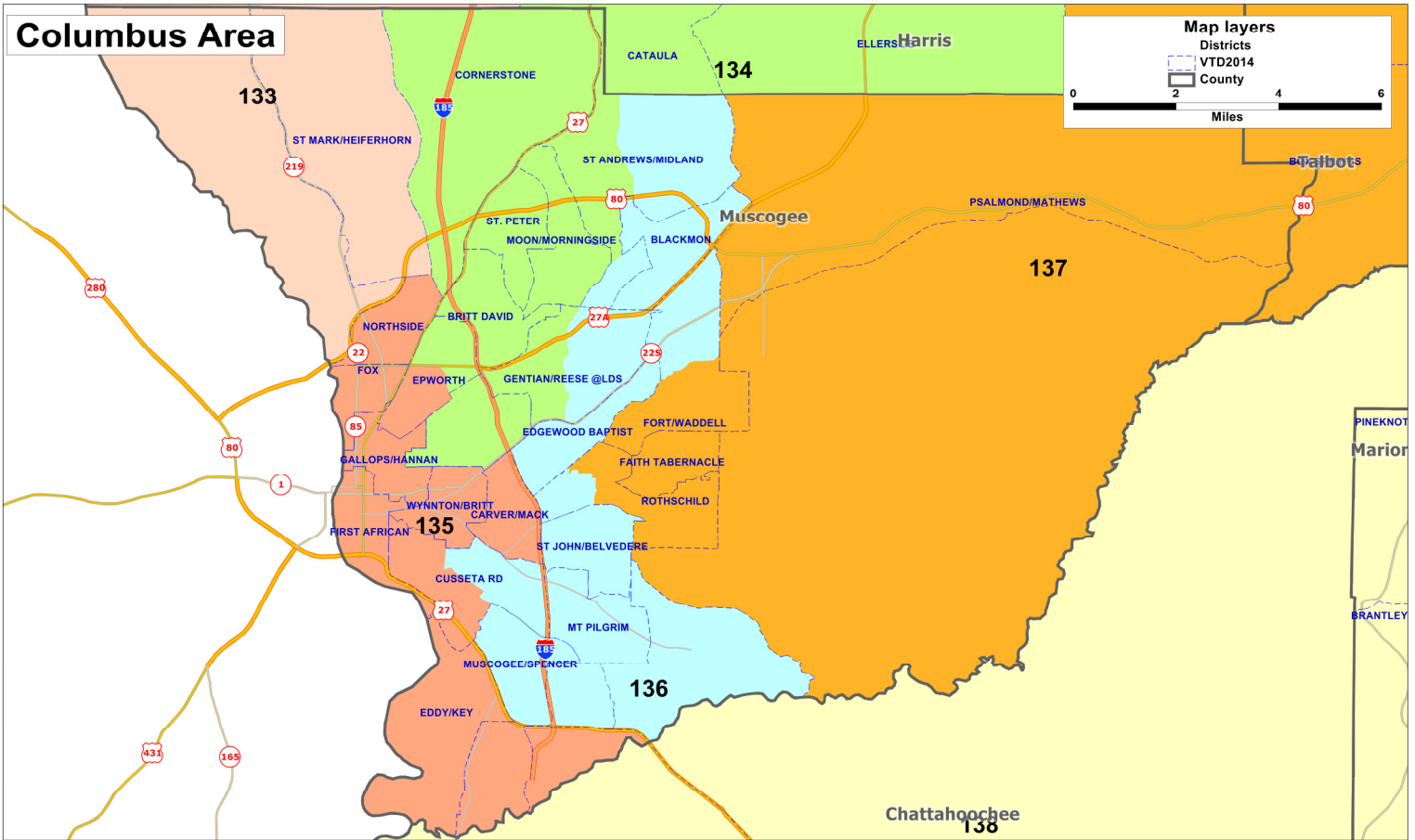
Georgia House Districts- 2015

Client: State
Plan: House15
Type: House



Georgia House Districts- 2015

Client: State
Plan: House15
Type: House



DISTRICT	POPULATION	DEVIATION	% DEVIATION	BLACK	% BLACK	BLACK COMBO	TOTAL BLACK	%TOTAL BLACK	HISP. OR LATINO	%HISP
001	53,612	-208	-0.39%	1,535	2.86%	262	1,797	3.35%	908	1.69%
VAP	41,298			1,115	2.70%	51	1,166	2.82%	539	1.31%
002	53,910	90	0.17%	1,946	3.61%	365	2,311	4.29%	1,772	3.29%
VAP	40,653			1,515	3.73%	68	1,583	3.89%	1,029	2.53%
003	53,366	-454	-0.84%	1,233	2.31%	356	1,589	2.98%	1,231	2.31%
VAP	40,240			837	2.08%	78	915	2.27%	739	1.84%
004	54,120	300	0.56%	2,526	4.67%	371	2,897	5.35%	22,063	40.77%
VAP	38,389			1,959	5.10%	108	2,067	5.38%	12,869	33.52%
005	53,589	-231	-0.43%	1,907	3.56%	378	2,285	4.26%	7,921	14.78%
VAP	38,998			1,439	3.69%	114	1,553	3.98%	4,695	12.04%
006	53,968	148	0.27%	1,079	2.00%	302	1,381	2.56%	11,676	21.64%
VAP	38,578			732	1.90%	80	812	2.10%	6,563	17.01%
007	54,058	238	0.44%	220	0.41%	109	329	0.61%	3,141	5.81%
VAP	43,050			145	0.34%	35	180	0.42%	1,876	4.36%
008	53,905	85	0.16%	341	0.63%	102	443	0.82%	2,111	3.92%
VAP	43,921			225	0.51%	38	263	0.60%	1,367	3.11%
009	54,289	469	0.87%	484	0.89%	229	713	1.31%	2,405	4.43%
VAP	41,849			385	0.92%	77	462	1.10%	1,538	3.68%
010	53,428	-392	-0.73%	1,709	3.20%	276	1,985	3.72%	5,147	9.63%
VAP	40,720			1,451	3.56%	59	1,510	3.71%	2,880	7.07%
011	53,610	-210	-0.39%	547	1.02%	182	729	1.36%	3,485	6.50%
VAP	40,794			397	0.97%	37	434	1.06%	1,979	4.85%
012	54,317	497	0.92%	4,835	8.90%	401	5,236	9.64%	3,021	5.56%
VAP	41,793			3,800	9.09%	93	3,893	9.31%	1,792	4.29%
013	53,445	-375	-0.70%	10,927	20.45%	530	11,457	21.44%	6,711	12.56%
VAP	40,153			7,827	19.49%	148	7,975	19.86%	4,030	10.04%
014	53,527	-293	-0.54%	3,436	6.42%	324	3,760	7.02%	2,658	4.97%
VAP	39,442			2,482	6.29%	74	2,556	6.48%	1,530	3.88%
015	53,473	-347	-0.64%	6,982	13.06%	515	7,497	14.02%	4,980	9.31%
VAP	39,649			4,875	12.30%	114	4,989	12.58%	2,965	7.48%

DISTRICT	POPULATION	DEVIATION	% DEVIATION	BLACK	% BLACK	BLACK COMBO	TOTAL BLACK	%TOTAL BLACK	HISP. OR LATINO	%HISP
016	53,926	106	0.20%	5,762	10.69%	421	6,183	11.47%	5,275	9.78%
VAP	39,416			4,022	10.20%	76	4,098	10.40%	2,989	7.58%
017	54,036	216	0.40%	7,427	13.74%	625	8,052	14.90%	2,553	4.72%
VAP	37,564			4,737	12.61%	204	4,941	13.15%	1,447	3.85%
018	53,682	-138	-0.26%	8,806	16.40%	661	9,467	17.64%	3,420	6.37%
VAP	40,084			6,453	16.10%	175	6,628	16.54%	2,178	5.43%
019	54,164	344	0.64%	9,875	18.23%	678	10,553	19.48%	3,119	5.76%
VAP	38,287			6,514	17.01%	219	6,733	17.59%	1,858	4.85%
020	53,679	-141	-0.26%	3,952	7.36%	515	4,467	8.32%	4,742	8.83%
VAP	38,519			2,661	6.91%	171	2,832	7.35%	2,952	7.66%
021	54,040	220	0.41%	2,842	5.26%	407	3,249	6.01%	5,000	9.25%
VAP	38,275			1,851	4.84%	118	1,969	5.14%	3,078	8.04%
022	54,090	270	0.50%	1,937	3.58%	304	2,241	4.14%	4,320	7.99%
VAP	38,675			1,318	3.41%	116	1,434	3.71%	2,747	7.10%
023	53,852	32	0.06%	3,248	6.03%	470	3,718	6.90%	7,412	13.76%
VAP	39,892			2,195	5.50%	150	2,345	5.88%	4,660	11.68%
024	54,284	464	0.86%	1,329	2.45%	249	1,578	2.91%	6,376	11.75%
VAP	38,393			884	2.30%	85	969	2.52%	4,020	10.47%
025	54,157	337	0.63%	1,888	3.49%	257	2,145	3.96%	3,338	6.16%
VAP	35,375			1,247	3.53%	92	1,339	3.79%	2,066	5.84%
026	54,311	491	0.91%	910	1.68%	206	1,116	2.05%	4,267	7.86%
VAP	38,827			608	1.57%	63	671	1.73%	2,632	6.78%
027	53,326	-494	-0.92%	1,741	3.26%	293	2,034	3.81%	7,710	14.46%
VAP	39,263			1,254	3.19%	62	1,316	3.35%	4,404	11.22%
028	53,438	-382	-0.71%	3,399	6.36%	387	3,786	7.08%	2,351	4.40%
VAP	40,671			2,532	6.23%	72	2,604	6.40%	1,370	3.37%
029	53,527	-293	-0.54%	6,698	12.51%	421	7,119	13.30%	23,417	43.75%
VAP	37,452			4,682	12.50%	145	4,827	12.89%	13,600	36.31%
030	53,787	-33	-0.06%	3,993	7.42%	317	4,310	8.01%	13,870	25.79%
VAP	39,178			2,920	7.45%	97	3,017	7.70%	8,081	20.63%

DISTRICT	POPULATION	DEVIATION	% DEVIATION	BLACK	% BLACK	BLACK COMBO	TOTAL BLACK	%TOTAL BLACK	HISP. OR LATINO	%HISP
031	53,585	-235	-0.44%	3,447	6.43%	387	3,834	7.15%	3,171	5.92%
VAP	39,241			2,497	6.36%	99	2,596	6.62%	1,929	4.92%
032	54,017	197	0.37%	6,708	12.42%	399	7,107	13.16%	1,802	3.34%
VAP	41,866			4,949	11.82%	82	5,031	12.02%	1,117	2.67%
033	53,537	-283	-0.53%	11,492	21.47%	272	11,764	21.97%	2,153	4.02%
VAP	41,192			8,525	20.70%	94	8,619	20.92%	1,275	3.10%
034	54,162	342	0.64%	9,819	18.13%	697	10,516	19.42%	4,900	9.05%
VAP	41,682			6,949	16.67%	317	7,266	17.43%	3,186	7.64%
035	53,394	-426	-0.79%	11,690	21.89%	730	12,420	23.26%	5,164	9.67%
VAP	37,954			7,649	20.15%	268	7,917	20.86%	3,263	8.60%
036	54,192	372	0.69%	6,790	12.53%	357	7,147	13.19%	2,318	4.28%
VAP	37,923			4,407	11.62%	133	4,540	11.97%	1,410	3.72%
037	54,233	413	0.77%	11,949	22.03%	700	12,649	23.32%	9,293	17.14%
VAP	40,849			8,494	20.79%	319	8,813	21.57%	5,939	14.54%
038	53,921	101	0.19%	24,203	44.89%	981	25,184	46.71%	6,021	11.17%
VAP	39,397			16,271	41.30%	406	16,677	42.33%	3,615	9.18%
039	54,192	372	0.69%	28,547	52.68%	924	29,471	54.38%	10,021	18.49%
VAP	38,182			19,598	51.33%	409	20,007	52.40%	6,010	15.74%
040	53,978	158	0.29%	11,978	22.19%	684	12,662	23.46%	3,223	5.97%
VAP	43,428			8,956	20.62%	340	9,296	21.41%	2,256	5.19%
041	54,148	328	0.61%	19,890	36.73%	1,013	20,903	38.60%	16,357	30.21%
VAP	38,676			13,816	35.72%	472	14,288	36.94%	9,798	25.33%
042	53,894	74	0.14%	21,005	38.97%	1,198	22,203	41.20%	14,955	27.75%
VAP	40,861			15,784	38.63%	609	16,393	40.12%	9,487	23.22%
043	53,969	149	0.28%	8,238	15.26%	525	8,763	16.24%	3,174	5.88%
VAP	42,593			6,228	14.62%	280	6,508	15.28%	2,300	5.40%
044	53,480	-340	-0.63%	6,539	12.23%	575	7,114	13.30%	4,140	7.74%
VAP	40,695			4,636	11.39%	216	4,852	11.92%	2,721	6.69%
045	53,969	149	0.28%	4,550	8.43%	355	4,905	9.09%	2,460	4.56%
VAP	40,117			3,547	8.84%	170	3,717	9.27%	1,647	4.11%

DISTRICT	POPULATION	DEVIATION	% DEVIATION	BLACK	% BLACK	BLACK COMBO	TOTAL BLACK	%TOTAL BLACK	HISP. OR LATINO	%HISP
046	53,712	-108	-0.20%	3,695	6.88%	489	4,184	7.79%	4,126	7.68%
VAP	39,868			2,628	6.59%	175	2,803	7.03%	2,715	6.81%
047	54,102	282	0.52%	4,362	8.06%	473	4,835	8.94%	2,934	5.42%
VAP	38,241			2,977	7.78%	189	3,166	8.28%	1,933	5.05%
048	53,832	12	0.02%	6,997	13.00%	585	7,582	14.08%	13,049	24.24%
VAP	40,207			4,882	12.14%	277	5,159	12.83%	8,433	20.97%
049	53,609	-211	-0.39%	5,368	10.01%	473	5,841	10.90%	3,993	7.45%
VAP	38,077			3,781	9.93%	197	3,978	10.45%	2,552	6.70%
050	53,486	-334	-0.62%	5,240	9.80%	459	5,699	10.66%	2,773	5.18%
VAP	36,917			3,406	9.23%	171	3,577	9.69%	1,768	4.79%
051	53,630	-190	-0.35%	11,461	21.37%	816	12,277	22.89%	5,150	9.60%
VAP	41,035			8,478	20.66%	412	8,890	21.66%	3,437	8.38%
052	53,458	-362	-0.67%	6,576	12.30%	576	7,152	13.38%	8,262	15.46%
VAP	41,106			5,215	12.69%	326	5,541	13.48%	5,325	12.95%
053	53,497	-323	-0.60%	33,213	62.08%	652	33,865	63.30%	4,481	8.38%
VAP	39,576			23,676	59.82%	394	24,070	60.82%	2,924	7.39%
054	53,576	-244	-0.45%	6,132	11.45%	454	6,586	12.29%	4,581	8.55%
VAP	44,566			5,448	12.22%	306	5,754	12.91%	3,405	7.64%
055	53,842	22	0.04%	37,621	69.87%	743	38,364	71.25%	1,482	2.75%
VAP	43,597			29,543	67.76%	505	30,048	68.92%	1,174	2.69%
056	53,564	-256	-0.48%	31,024	57.92%	780	31,804	59.38%	1,832	3.42%
VAP	46,750			25,255	54.02%	631	25,886	55.37%	1,619	3.46%
057	54,205	385	0.72%	30,771	56.77%	671	31,442	58.01%	2,798	5.16%
VAP	45,178			24,643	54.55%	534	25,177	55.73%	2,120	4.69%
058	53,635	-185	-0.34%	32,345	60.31%	748	33,093	61.70%	2,092	3.90%
VAP	44,854			25,212	56.21%	562	25,774	57.46%	1,733	3.86%
059	53,372	-448	-0.83%	28,660	53.70%	674	29,334	54.96%	6,170	11.56%
VAP	40,952			20,482	50.01%	391	20,873	50.97%	4,253	10.39%
060	53,677	-143	-0.27%	38,767	72.22%	730	39,497	73.58%	7,554	14.07%
VAP	38,830			27,858	71.74%	403	28,261	72.78%	4,662	12.01%

DISTRICT	POPULATION	DEVIATION	% DEVIATION	BLACK	% BLACK	BLACK COMBO	TOTAL BLACK	%TOTAL BLACK	HISP. OR LATINO	%HISP
061	54,224	404	0.75%	38,149	70.35%	875	39,024	71.97%	4,493	8.29%
VAP	39,023			27,018	69.24%	402	27,420	70.27%	2,640	6.77%
062	53,740	-80	-0.15%	38,133	70.96%	954	39,087	72.73%	2,553	4.75%
VAP	38,345			26,396	68.84%	454	26,850	70.02%	1,522	3.97%
063	53,547	-273	-0.51%	35,269	65.87%	810	36,079	67.38%	2,278	4.25%
VAP	39,038			24,804	63.54%	398	25,202	64.56%	1,487	3.81%
064	53,952	132	0.25%	33,817	62.68%	799	34,616	64.16%	3,109	5.76%
VAP	39,190			23,598	60.21%	406	24,004	61.25%	1,841	4.70%
065	54,298	478	0.89%	38,285	70.51%	894	39,179	72.16%	4,408	8.12%
VAP	37,616			25,584	68.01%	425	26,009	69.14%	2,626	6.98%
066	54,130	310	0.58%	23,094	42.66%	876	23,970	44.28%	3,639	6.72%
VAP	38,363			15,162	39.52%	338	15,500	40.40%	2,217	5.78%
067	54,230	410	0.76%	11,110	20.49%	630	11,740	21.65%	3,037	5.60%
VAP	38,436			7,300	18.99%	230	7,530	19.59%	1,790	4.66%
068	54,226	406	0.75%	8,853	16.33%	678	9,531	17.58%	2,456	4.53%
VAP	38,995			5,909	15.15%	165	6,074	15.58%	1,474	3.78%
069	54,158	338	0.63%	7,255	13.40%	470	7,725	14.26%	1,818	3.36%
VAP	41,364			5,633	13.62%	138	5,771	13.95%	1,129	2.73%
070	54,341	521	0.97%	10,838	19.94%	542	11,380	20.94%	3,742	6.89%
VAP	40,088			7,608	18.98%	163	7,771	19.38%	2,460	6.14%
071	54,165	345	0.64%	5,449	10.06%	407	5,856	10.81%	3,399	6.28%
VAP	38,886			3,933	10.11%	146	4,079	10.49%	2,144	5.51%
072	53,807	-13	-0.02%	3,588	6.67%	351	3,939	7.32%	3,036	5.64%
VAP	38,955			2,461	6.32%	113	2,574	6.61%	1,913	4.91%
073	53,951	131	0.24%	14,857	27.54%	639	15,496	28.72%	2,621	4.86%
VAP	39,535			9,970	25.22%	208	10,178	25.74%	1,646	4.16%
074	53,401	-419	-0.78%	34,347	64.32%	850	35,197	65.91%	8,406	15.74%
VAP	38,810			24,808	63.92%	463	25,271	65.11%	5,259	13.55%
075	53,930	110	0.20%	36,879	68.38%	1,054	37,933	70.34%	5,741	10.65%
VAP	38,464			25,611	66.58%	483	26,094	67.84%	3,446	8.96%

DISTRICT	POPULATION	DEVIATION	% DEVIATION	BLACK	% BLACK	BLACK COMBO	TOTAL BLACK	%TOTAL BLACK	HISP. OR LATINO	%HISP
076	53,288	-532	-0.99%	34,414	64.58%	786	35,200	66.06%	4,951	9.29%
VAP	38,157			23,894	62.62%	357	24,251	63.56%	3,019	7.91%
077	53,704	-116	-0.22%	37,203	69.27%	910	38,113	70.97%	8,525	15.87%
VAP	37,349			25,612	68.57%	433	26,045	69.73%	5,151	13.79%
078	53,616	-204	-0.38%	31,896	59.49%	1,108	33,004	61.56%	5,790	10.80%
VAP	38,129			21,597	56.64%	494	22,091	57.94%	3,625	9.51%
079	53,714	-106	-0.20%	7,883	14.68%	510	8,393	15.63%	7,608	14.16%
VAP	41,179			6,289	15.27%	320	6,609	16.05%	5,275	12.81%
080	53,535	-285	-0.53%	6,054	11.31%	457	6,511	12.16%	11,065	20.67%
VAP	43,496			5,068	11.65%	316	5,384	12.38%	7,674	17.64%
081	53,590	-230	-0.43%	5,687	10.61%	493	6,180	11.53%	20,956	39.10%
VAP	41,186			4,247	10.31%	271	4,518	10.97%	14,601	35.45%
082	53,564	-256	-0.48%	7,969	14.88%	525	8,494	15.86%	12,180	22.74%
VAP	43,727			6,815	15.59%	355	7,170	16.40%	8,522	19.49%
083	53,652	-168	-0.31%	33,705	62.82%	571	34,276	63.89%	1,467	2.73%
VAP	41,089			24,998	60.84%	328	25,326	61.64%	1,023	2.49%
084	53,650	-170	-0.32%	32,938	61.39%	585	33,523	62.48%	1,284	2.39%
VAP	41,782			24,546	58.75%	341	24,887	59.56%	907	2.17%
085	54,195	375	0.70%	32,012	59.07%	793	32,805	60.53%	1,954	3.61%
VAP	41,110			23,561	57.31%	440	24,001	58.38%	1,360	3.31%
086	53,878	58	0.11%	33,655	62.47%	737	34,392	63.83%	2,214	4.11%
VAP	40,880			24,798	60.66%	427	25,225	61.70%	1,490	3.64%
087	54,104	284	0.53%	36,835	68.08%	837	37,672	69.63%	3,125	5.78%
VAP	40,610			26,585	65.46%	449	27,034	66.57%	2,190	5.39%
088	54,194	374	0.69%	34,637	63.91%	979	35,616	65.72%	6,361	11.74%
VAP	40,173			24,669	61.41%	586	25,255	62.87%	4,198	10.45%
089	53,838	18	0.03%	34,951	64.92%	637	35,588	66.10%	1,503	2.79%
VAP	42,011			26,139	62.22%	361	26,500	63.08%	1,071	2.55%
090	53,620	-200	-0.37%	36,611	68.28%	714	37,325	69.61%	1,408	2.63%
VAP	39,580			26,443	66.81%	399	26,842	67.82%	864	2.18%

DISTRICT	POPULATION	DEVIATION	% DEVIATION	BLACK	% BLACK	BLACK COMBO	TOTAL BLACK	%TOTAL BLACK	HISP. OR LATINO	%HISP
091	54,022	202	0.38%	35,420	65.57%	811	36,231	67.07%	2,175	4.03%
VAP	39,377			24,512	62.25%	415	24,927	63.30%	1,384	3.51%
092	54,205	385	0.72%	36,762	67.82%	776	37,538	69.25%	6,562	12.11%
VAP	38,475			25,431	66.10%	381	25,812	67.09%	4,018	10.44%
093	54,333	513	0.95%	36,227	66.68%	1,104	37,331	68.71%	3,671	6.76%
VAP	37,658			24,013	63.77%	494	24,507	65.08%	2,177	5.78%
094	53,570	-250	-0.46%	36,237	67.64%	995	37,232	69.50%	3,550	6.63%
VAP	38,031			24,673	64.88%	481	25,154	66.14%	2,148	5.65%
095	54,289	469	0.87%	11,420	21.04%	715	12,135	22.35%	8,319	15.32%
VAP	39,953			7,981	19.98%	367	8,348	20.89%	5,381	13.47%
096	53,962	142	0.26%	10,302	19.09%	786	11,088	20.55%	18,505	34.29%
VAP	39,523			7,170	18.14%	352	7,522	19.03%	11,993	30.34%
097	53,821	1	0.00%	5,908	10.98%	505	6,413	11.92%	5,064	9.41%
VAP	38,410			3,878	10.10%	189	4,067	10.59%	3,202	8.34%
098	53,671	-149	-0.28%	6,717	12.52%	553	7,270	13.55%	8,695	16.20%
VAP	37,068			4,376	11.81%	169	4,545	12.26%	5,260	14.19%
099	53,673	-147	-0.27%	11,385	21.21%	760	12,145	22.63%	29,958	55.82%
VAP	37,254			8,028	21.55%	352	8,380	22.49%	19,276	51.74%
100	53,679	-141	-0.26%	17,322	32.27%	1,057	18,379	34.24%	20,465	38.12%
VAP	37,465			11,910	31.79%	452	12,362	33.00%	12,873	34.36%
101	53,747	-73	-0.14%	11,266	20.96%	721	11,987	22.30%	11,208	20.85%
VAP	38,785			7,513	19.37%	300	7,813	20.14%	7,056	18.19%
102	53,770	-50	-0.09%	10,217	19.00%	785	11,002	20.46%	7,262	13.51%
VAP	39,110			7,083	18.11%	353	7,436	19.01%	4,984	12.74%
103	53,533	-287	-0.53%	5,439	10.16%	428	5,867	10.96%	5,619	10.50%
VAP	37,957			3,699	9.75%	144	3,843	10.12%	3,420	9.01%
104	53,774	-46	-0.09%	12,344	22.96%	679	13,023	24.22%	6,730	12.52%
VAP	36,121			7,783	21.55%	244	8,027	22.22%	4,149	11.49%
105	53,542	-278	-0.52%	17,754	33.16%	819	18,573	34.69%	6,527	12.19%
VAP	36,449			11,266	30.91%	331	11,597	31.82%	3,945	10.82%

DISTRICT	POPULATION	DEVIATION	% DEVIATION	BLACK	% BLACK	BLACK COMBO	TOTAL BLACK	%TOTAL BLACK	HISP. OR LATINO	%HISP
106	53,473	-347	-0.64%	15,161	28.35%	818	15,979	29.88%	5,451	10.19%
VAP	38,585			9,774	25.33%	319	10,093	26.16%	3,298	8.55%
107	53,368	-452	-0.84%	12,120	22.71%	697	12,817	24.02%	10,021	18.78%
VAP	37,377			7,826	20.94%	295	8,121	21.73%	6,104	16.33%
108	53,549	-271	-0.50%	8,812	16.46%	619	9,431	17.61%	10,315	19.26%
VAP	39,456			5,970	15.13%	265	6,235	15.80%	6,437	16.31%
109	54,153	333	0.62%	16,366	30.22%	681	17,047	31.48%	2,434	4.49%
VAP	38,385			10,881	28.35%	262	11,143	29.03%	1,467	3.82%
110	54,298	478	0.89%	17,021	31.35%	682	17,703	32.60%	2,450	4.51%
VAP	38,485			11,454	29.76%	223	11,677	30.34%	1,472	3.82%
111	54,293	473	0.88%	18,415	33.92%	754	19,169	35.31%	3,217	5.93%
VAP	38,235			12,060	31.54%	293	12,353	32.31%	2,003	5.24%
112	53,657	-163	-0.30%	11,816	22.02%	405	12,221	22.78%	1,664	3.10%
VAP	40,120			8,436	21.03%	116	8,552	21.32%	1,010	2.52%
113	53,670	-150	-0.28%	31,651	58.97%	986	32,637	60.81%	3,129	5.83%
VAP	37,191			20,824	55.99%	390	21,214	57.04%	1,827	4.91%
114	53,571	-249	-0.46%	8,328	15.55%	452	8,780	16.39%	3,148	5.88%
VAP	38,119			5,386	14.13%	180	5,566	14.60%	1,883	4.94%
115	53,559	-261	-0.48%	10,507	19.62%	446	10,953	20.45%	1,482	2.77%
VAP	39,330			7,264	18.47%	122	7,386	18.78%	897	2.28%
116	53,885	65	0.12%	5,611	10.41%	574	6,185	11.48%	4,524	8.40%
VAP	38,935			3,872	9.94%	147	4,019	10.32%	2,691	6.91%
117	54,352	532	0.99%	9,709	17.86%	454	10,163	18.70%	4,069	7.49%
VAP	43,102			7,216	16.74%	183	7,399	17.17%	2,663	6.18%
118	53,858	38	0.07%	18,108	33.62%	557	18,665	34.66%	8,188	15.20%
VAP	42,287			12,713	30.06%	285	12,998	30.74%	5,013	11.85%
119	53,330	-490	-0.91%	6,265	11.75%	333	6,598	12.37%	2,297	4.31%
VAP	43,291			4,884	11.28%	168	5,052	11.67%	1,660	3.83%
120	53,857	37	0.07%	16,605	30.83%	456	17,061	31.68%	2,780	5.16%
VAP	42,036			12,251	29.14%	143	12,394	29.48%	1,722	4.10%

DISTRICT	POPULATION	DEVIATION	% DEVIATION	BLACK	% BLACK	BLACK COMBO	TOTAL BLACK	%TOTAL BLACK	HISP. OR LATINO	%HISP
121	54,069	249	0.46%	13,423	24.83%	666	14,089	26.06%	2,902	5.37%
VAP	39,434			9,176	23.27%	181	9,357	23.73%	1,781	4.52%
122	53,789	-31	-0.06%	6,226	11.57%	518	6,744	12.54%	2,262	4.21%
VAP	38,559			4,361	11.31%	184	4,545	11.79%	1,410	3.66%
123	54,305	485	0.90%	9,760	17.97%	599	10,359	19.08%	1,999	3.68%
VAP	41,748			7,090	16.98%	212	7,302	17.49%	1,331	3.19%
124	53,886	66	0.12%	30,939	57.42%	770	31,709	58.84%	2,081	3.86%
VAP	42,242			22,804	53.98%	373	23,177	54.87%	1,469	3.48%
125	54,151	331	0.62%	28,973	53.50%	921	29,894	55.20%	1,676	3.10%
VAP	39,400			19,900	50.51%	339	20,239	51.37%	1,044	2.65%
126	53,613	-207	-0.38%	32,597	60.80%	823	33,420	62.34%	1,876	3.50%
VAP	38,267			22,371	58.46%	340	22,711	59.35%	1,202	3.14%
127	53,672	-148	-0.27%	29,218	54.44%	893	30,111	56.10%	2,937	5.47%
VAP	40,411			20,748	51.34%	418	21,166	52.38%	2,110	5.22%
128	53,559	-261	-0.48%	30,209	56.40%	285	30,494	56.94%	957	1.79%
VAP	41,388			22,575	54.54%	106	22,681	54.80%	714	1.73%
129	53,337	-483	-0.90%	14,381	26.96%	360	14,741	27.64%	1,278	2.40%
VAP	40,449			10,955	27.08%	109	11,064	27.35%	809	2.00%
130	53,697	-123	-0.23%	18,943	35.28%	516	19,459	36.24%	1,881	3.50%
VAP	39,742			13,066	32.88%	199	13,265	33.38%	1,201	3.02%
131	54,163	343	0.64%	13,302	24.56%	383	13,685	25.27%	941	1.74%
VAP	41,142			10,180	24.74%	116	10,296	25.03%	620	1.51%
132	53,756	-64	-0.12%	22,850	42.51%	611	23,461	43.64%	2,993	5.57%
VAP	38,796			15,728	40.54%	150	15,878	40.93%	2,014	5.19%
133	53,564	-256	-0.48%	10,194	19.03%	309	10,503	19.61%	1,442	2.69%
VAP	40,825			7,453	18.26%	104	7,557	18.51%	953	2.33%
134	53,328	-492	-0.91%	8,669	16.26%	693	9,362	17.56%	2,977	5.58%
VAP	40,802			6,422	15.74%	262	6,684	16.38%	1,962	4.81%
135	53,588	-232	-0.43%	30,110	56.19%	1,125	31,235	58.29%	4,186	7.81%
VAP	39,104			21,170	54.14%	443	21,613	55.27%	2,757	7.05%

DISTRICT	POPULATION	DEVIATION	% DEVIATION	BLACK	% BLACK	BLACK COMBO	TOTAL BLACK	%TOTAL BLACK	HISP. OR LATINO	%HISP
136	53,614	-206	-0.38%	30,009	55.97%	1,138	31,147	58.09%	3,646	6.80%
VAP	39,806			21,582	54.22%	480	22,062	55.42%	2,387	6.00%
137	53,431	-389	-0.72%	28,843	53.98%	719	29,562	55.33%	1,627	3.05%
VAP	39,957			20,679	51.75%	250	20,929	52.38%	1,047	2.62%
138	53,825	5	0.01%	21,540	40.02%	442	21,982	40.84%	3,609	6.71%
VAP	39,760			15,006	37.74%	177	15,183	38.19%	2,328	5.86%
139	53,594	-226	-0.42%	30,419	56.76%	354	30,773	57.42%	2,853	5.32%
VAP	41,652			23,330	56.01%	204	23,534	56.50%	1,875	4.50%
140	54,060	240	0.45%	17,710	32.76%	493	18,203	33.67%	2,454	4.54%
VAP	41,014			12,871	31.38%	147	13,018	31.74%	1,567	3.82%
141	54,344	524	0.97%	13,277	24.43%	392	13,669	25.15%	1,274	2.34%
VAP	41,154			9,099	22.11%	139	9,238	22.45%	833	2.02%
142	53,493	-327	-0.61%	35,250	65.90%	496	35,746	66.82%	1,517	2.84%
VAP	38,488			24,083	62.57%	203	24,286	63.10%	942	2.45%
143	53,945	125	0.23%	33,332	61.79%	483	33,815	62.68%	1,502	2.78%
VAP	40,592			23,357	57.54%	234	23,591	58.12%	1,014	2.50%
144	53,343	-477	-0.89%	14,930	27.99%	300	15,230	28.55%	1,376	2.58%
VAP	40,553			11,095	27.36%	104	11,199	27.62%	877	2.16%
145	53,485	-335	-0.62%	21,392	40.00%	366	21,758	40.68%	1,251	2.34%
VAP	42,344			15,623	36.90%	115	15,738	37.17%	862	2.04%
146	53,671	-149	-0.28%	13,251	24.69%	608	13,859	25.82%	2,228	4.15%
VAP	38,823			9,286	23.92%	189	9,475	24.41%	1,390	3.58%
147	53,333	-487	-0.90%	15,436	28.94%	829	16,265	30.50%	4,311	8.08%
VAP	39,589			10,438	26.37%	293	10,731	27.11%	2,733	6.90%
148	53,393	-427	-0.79%	19,030	35.64%	322	19,352	36.24%	1,831	3.43%
VAP	40,651			13,743	33.81%	126	13,869	34.12%	1,160	2.85%
149	53,612	-208	-0.39%	17,201	32.08%	322	17,523	32.68%	3,690	6.88%
VAP	41,813			13,187	31.54%	115	13,302	31.81%	2,916	6.97%
150	54,142	322	0.60%	18,753	34.64%	356	19,109	35.29%	1,247	2.30%
VAP	40,188			12,988	32.32%	116	13,104	32.61%	785	1.95%

DISTRICT	POPULATION	DEVIATION	% DEVIATION	BLACK	% BLACK	BLACK COMBO	TOTAL BLACK	%TOTAL BLACK	HISP. OR LATINO	%HISP
151	54,071	251	0.47%	29,610	54.76%	313	29,923	55.34%	2,394	4.43%
VAP	41,637			21,454	51.53%	134	21,588	51.85%	2,061	4.95%
152	53,990	170	0.32%	12,855	23.81%	284	13,139	24.34%	1,132	2.10%
VAP	39,824			9,127	22.92%	77	9,204	23.11%	710	1.78%
153	54,116	296	0.55%	33,967	62.77%	490	34,457	63.67%	1,580	2.92%
VAP	40,411			23,848	59.01%	205	24,053	59.52%	1,045	2.59%
154	53,972	152	0.28%	33,354	61.80%	360	33,714	62.47%	862	1.60%
VAP	40,393			23,672	58.60%	178	23,850	59.04%	513	1.27%
155	54,043	223	0.41%	15,240	28.20%	281	15,521	28.72%	2,831	5.24%
VAP	40,679			10,900	26.80%	83	10,983	27.00%	1,681	4.13%
156	53,637	-183	-0.34%	12,233	22.81%	319	12,552	23.40%	4,969	9.26%
VAP	39,399			8,497	21.57%	74	8,571	21.75%	2,899	7.36%
157	54,334	514	0.96%	14,713	27.08%	424	15,137	27.86%	4,887	8.99%
VAP	41,282			11,249	27.25%	118	11,367	27.54%	3,022	7.32%
158	53,861	41	0.08%	18,526	34.40%	315	18,841	34.98%	2,949	5.48%
VAP	40,158			12,947	32.24%	93	13,040	32.47%	1,874	4.67%
159	53,363	-457	-0.85%	15,415	28.89%	402	15,817	29.64%	1,038	1.95%
VAP	39,250			10,779	27.46%	127	10,906	27.79%	620	1.58%
160	53,304	-516	-0.96%	10,997	20.63%	445	11,442	21.47%	1,887	3.54%
VAP	43,070			8,753	20.32%	216	8,969	20.82%	1,351	3.14%
161	53,931	111	0.21%	9,998	18.54%	529	10,527	19.52%	2,617	4.85%
VAP	39,726			7,006	17.64%	179	7,185	18.09%	1,656	4.17%
162	53,981	161	0.30%	27,992	51.86%	803	28,795	53.34%	5,485	10.16%
VAP	39,859			19,383	48.63%	336	19,719	49.47%	3,728	9.35%
163	53,520	-300	-0.56%	28,079	52.46%	530	28,609	53.45%	1,758	3.28%
VAP	42,793			20,228	47.27%	321	20,549	48.02%	1,475	3.45%
164	53,429	-391	-0.73%	13,204	24.71%	1,021	14,225	26.62%	4,381	8.20%
VAP	37,716			8,909	23.62%	333	9,242	24.50%	2,632	6.98%
165	54,351	531	0.99%	30,977	56.99%	701	31,678	58.28%	2,028	3.73%
VAP	41,872			22,491	53.71%	316	22,807	54.47%	1,408	3.36%

DISTRICT	POPULATION	DEVIATION	% DEVIATION	BLACK	% BLACK	BLACK COMBO	TOTAL BLACK	%TOTAL BLACK	HISP. OR LATINO	%HISP
166	54,038	218	0.41%	4,275	7.91%	272	4,547	8.41%	1,443	2.67%
VAP	43,168			3,291	7.62%	101	3,392	7.86%	969	2.24%
167	54,342	522	0.97%	12,046	22.17%	583	12,629	23.24%	3,335	6.14%
VAP	40,594			8,684	21.39%	198	8,882	21.88%	2,006	4.94%
168	54,032	212	0.39%	24,420	45.20%	1,531	25,951	48.03%	4,881	9.03%
VAP	38,351			16,808	43.83%	556	17,364	45.28%	2,968	7.74%
169	53,952	132	0.25%	12,331	22.86%	390	12,721	23.58%	5,644	10.46%
VAP	39,735			8,807	22.16%	105	8,912	22.43%	3,339	8.40%
170	53,301	-519	-0.96%	12,065	22.64%	311	12,376	23.22%	3,742	7.02%
VAP	39,206			8,174	20.85%	87	8,261	21.07%	2,166	5.52%
171	54,189	369	0.69%	21,032	38.81%	261	21,293	39.29%	3,444	6.36%
VAP	40,274			14,885	36.96%	87	14,972	37.18%	2,118	5.26%
172	53,287	-533	-0.99%	15,471	29.03%	309	15,780	29.61%	7,770	14.58%
VAP	38,475			10,638	27.65%	108	10,746	27.93%	4,659	12.11%
173	54,287	467	0.87%	19,776	36.43%	330	20,106	37.04%	3,674	6.77%
VAP	40,561			14,138	34.86%	133	14,271	35.18%	2,291	5.65%
174	54,123	303	0.56%	12,704	23.47%	537	13,241	24.46%	3,582	6.62%
VAP	39,946			8,967	22.45%	150	9,117	22.82%	2,218	5.55%
175	53,794	-26	-0.05%	14,166	26.33%	261	14,427	26.82%	2,008	3.73%
VAP	41,150			10,447	25.39%	112	10,559	25.66%	1,306	3.17%
176	54,193	373	0.69%	12,876	23.76%	507	13,383	24.70%	4,129	7.62%
VAP	40,044			9,532	23.80%	167	9,699	24.22%	2,471	6.17%
177	54,095	275	0.51%	29,446	54.43%	637	30,083	55.61%	2,298	4.25%
VAP	41,485			20,793	50.12%	294	21,087	50.83%	1,649	3.97%
178	53,463	-357	-0.66%	4,529	8.47%	273	4,802	8.98%	2,402	4.49%
VAP	40,080			3,528	8.80%	80	3,608	9.00%	1,586	3.96%
179	54,081	261	0.48%	17,476	32.31%	512	17,988	33.26%	3,796	7.02%
VAP	41,101			12,003	29.20%	184	12,187	29.65%	2,455	5.97%
180	53,321	-499	-0.93%	10,316	19.35%	728	11,044	20.71%	2,504	4.70%
VAP	39,225			7,131	18.18%	209	7,340	18.71%	1,577	4.02%

DISTRICT	POPULATION	DEVIATION	% DEVIATION	BLACK	% BLACK	BLACK COMBO	TOTAL BLACK	%TOTAL BLACK	HISP. OR LATINO	%HISP
----------	------------	-----------	----------------	-------	------------	----------------	----------------	-----------------	--------------------	-------

Total Population: 9,687,653

Ideal Value: 53,820

Summary Statistics

Population Range: 53,287 to 54,352

Absolute Overall Range: 1,065

Relative Range: -0.99% to 0.99%

Relative Overall Range: 1.98%